



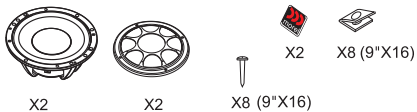
**ELATE 502/602/902**

**ELATE 503/603/903**

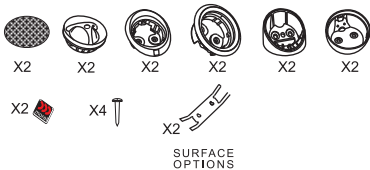
**2-Way / 3-Way Component Systems Installation Guide**

## PACKAGE CONTENT

### ELATE 5",6",9" WOOFER



### MT250 TWEETER



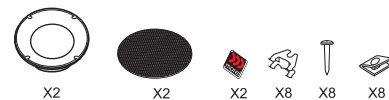
### MXR280 CROSSOVER (ONLY IN 502 / 602 / 902)



### MXR380 CROSSOVER (ONLY IN 503 / 603 / 903)

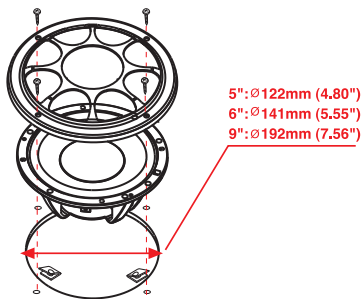


### CDM 880 MIDRANGE (ONLY IN 503 / 603 / 903)

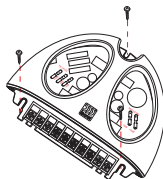


## WOOFER & CROSSOVER MOUNTING

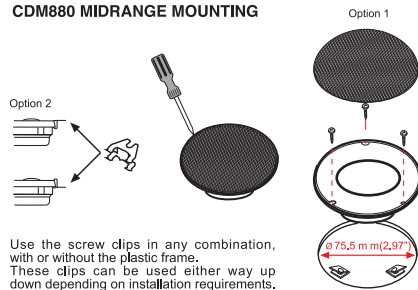
### 5",6",9" UNIT



### MXR280 & MXR380 CROSSOVER MOUNTING

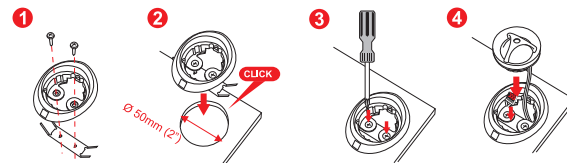


### CDM880 MIDRANGE MOUNTING

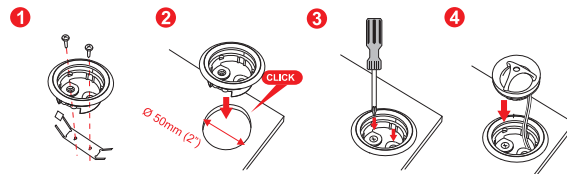


## TWEETER MOUNTING

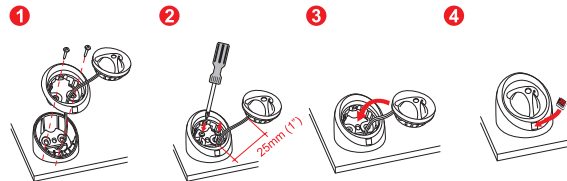
### FLUSH MOUNTING OPTION 1



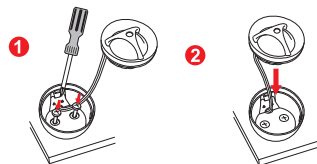
### FLUSH MOUNTING OPTION 2



### SURFACE MOUNTING OPTION 1

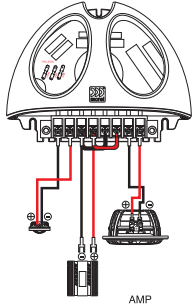


### SURFACE MOUNTING OPTION 2

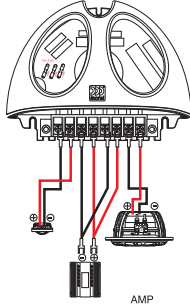


## MXR280 2-WAY CROSSOVER WIRING OPTIONS

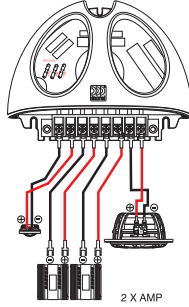
- 1 Standard wire connection\**  
With bridged Jumpers



- 2 Bi Wire connection\**  
No bridged jumpers

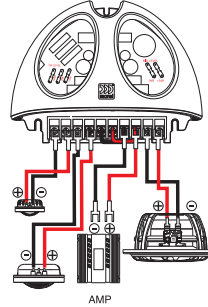


- 3 Bi Amp connection\**  
No bridge jumpers

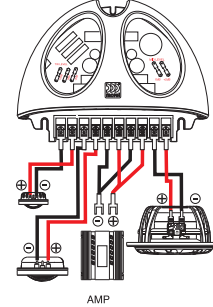


## MXR380 3-WAY CROSSOVER WIRING OPTIONS

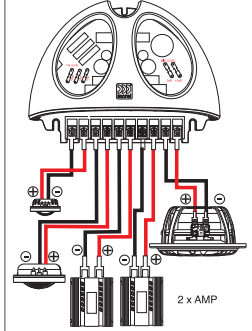
- 1 Standard wire connection\**  
With bridged Jumpers



- 2 Bi Wire connection\**  
No bridged jumpers

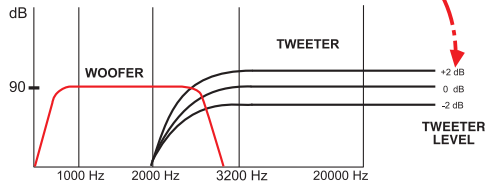
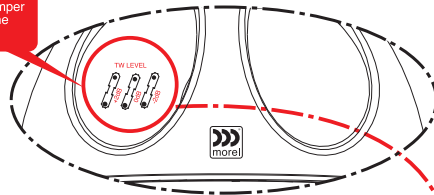


- 3 Bi Amp connection\**  
No bridge jumpers



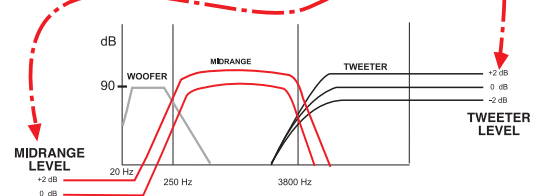
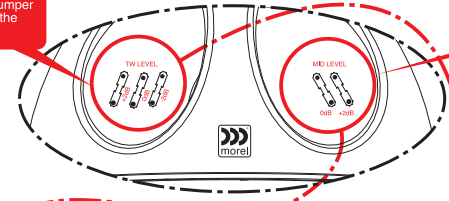
## MXR280 CROSSOVER ALIGNMENT SYSTEMS

Use the red jumper to determine the tweeter level



## MXR380 CROSSOVER ALIGNMENT SYSTEMS

Use the red jumper to determine the tweeter level



## SPECIFICATIONS

WOOFERS	ELATE MW5	ELATE MW6	ELATE MW9
Nominal Impedance (Ohms)	4	4	4
Power Handling Wrms	160	180	200
Max. Trans.Pwr Handling Wrms	1000	1000	1000
Sensitivity (2.83V/1M)	87dB	88dB	89 dB
Frequency Response Hz	40-5000	30-4000	25-3000
Resonant Freq. Fs Hz	50	43	38
Voice Coil Diameter mm	75	75	75
Voice Coil Height mm (inch)	14.50 (0.57)	14.50 (0.57)	14.50 (0.57)
Voice Coil Type/ Former	Aluminum	Aluminum	Aluminum
Voice Coil Wire	Hexatech™aluminum	Hexatech™ aluminum	Hexatech™ aluminum
DC Resistance (Ohms)	3.6	3.6	3.6
Voice Coil Induct. @1 kHz (MH)	0.41	0.41	0.43
Magnet System	Double magnet rear vented	Double magnet rear vented	Double magnet rear vented
HE-Magnetic Gap Height mm (inch)	5 (0.20)	5 (0.20)	5 (0.20)
B-Flux Density (T.M.)	0.66	0.66	0.74
BL Product/BXL	5.41	5.37	6.3
Max. Linear Ex./Xmax mm (inch)	9.50±4.75mm (0.4±0.2)	9.50±4.75mm (0.4±0.2)	9.50±4.75mm (0.4±0.2)
Suspension Compliance CMS - mm/N	0.69	0.81	0.49
Electrical Q Factor QES	0.56	0.57	0.79
QTS	0.43	0.44	0.59
QMS	1.87	1.87	2.4
Mech.Resistance RMS - Ohm/meter	2.43	2.41	3.63
Moving Mass MMS - gr/ ounce	14.48	16.9	36
Equiv. Can Air Load VAS - L (cu.ft)	8 (0.28)	16.02 (0.56)	40 (1.42)
Effective Piston Area SD sq.cm (sq. inch)	90 (13.95)	119 (18.45)	219 (33.95)
Cone Type	One-piece formed	One-piece formed	One-piece formed
Cone Material	DPC	DPC	DPC
Unit Diameter mm (inch)	135 (5.25)	165 (6.50)	222 (8.75)
Mounting Depth mm (inch)	60 (2.36)	61 (2.40)	71 (2.80)
Mounting Cutout mm (inch)	120 (4.72)	141 (5.55)	192 (7.56)
Net Weight Kg (lb)	1.05 (2.31)	1.18 (2.60)	1.42 (3.13)

MIDS & TWEETERS	CDM880	MT250
Nominal Impedance (Ohm)	4	6
Power Handling (WRms)	100	130
Max Transient Power Handling W (10ms)	300	350
Sensitivity (2.83V/1M) dB	91	93
Frequency Response Hz	450-6000	1400-25000
FS Hz	390	1100
Voice Coil Diameter mm (inch)	54 (2.125)	28 (1.125)
Voice Coil Former	Aluminum	Aluminum
Voice Coil Wire	Hexatech™ aluminum	Hexatech™ aluminum
DC Resistance Ohm	3.5	5.2
Magnet System	Neodymium Rear Vented	Double Magnet Neodymium
Dome Type	Acuflex™ hand coated soft dome	Acuflex™ hand coated soft dome
Dome Material	Silk	Silk
Unit Diameter mm (inch)	88.00 (3.50)	45.00 (1.80)
Mounting Depth mm (inch)	21.00 (0.83)	20.00 (0.80)
Mounting Cutout mm (inch)	75.50 (2.97)	50.00 (2.00)
Net Weight Kg(lb)	0.25 (0.55)	0.07 (0.15)

CROSSOVERS	MXR280	MXR380
Crossover Point	W: 300Hz/18dB T: 2200Hz /12dB	W: 300Hz/12dB M:12dB/2200Hz/18dB T: 2200Hz/ 18dB
Crossover Controls	Tweeter+/- 2dB	Tweeter+/- 2dB Mid -2dB
Wiring Options	Bi wire / Bi amp	Bi wire / Bi amp

\* Morel operates a policy of continuous products design improvement, consequently specifications are subject to alteration without prior notice.

